

PRODUCT INFORMATION PACKET

marathon[®]
Motors

Model No: 213THTS19005
Catalog No: W531
7 1/2,3600,TENV,213T,3/60/575
Severe Duty



Regal and Marathon are trademarks of Regal Beloit Corporation or one of its affiliated companies.
©2018 Regal Beloit Corporation, All Rights Reserved. MC017097E

REGAL[®]



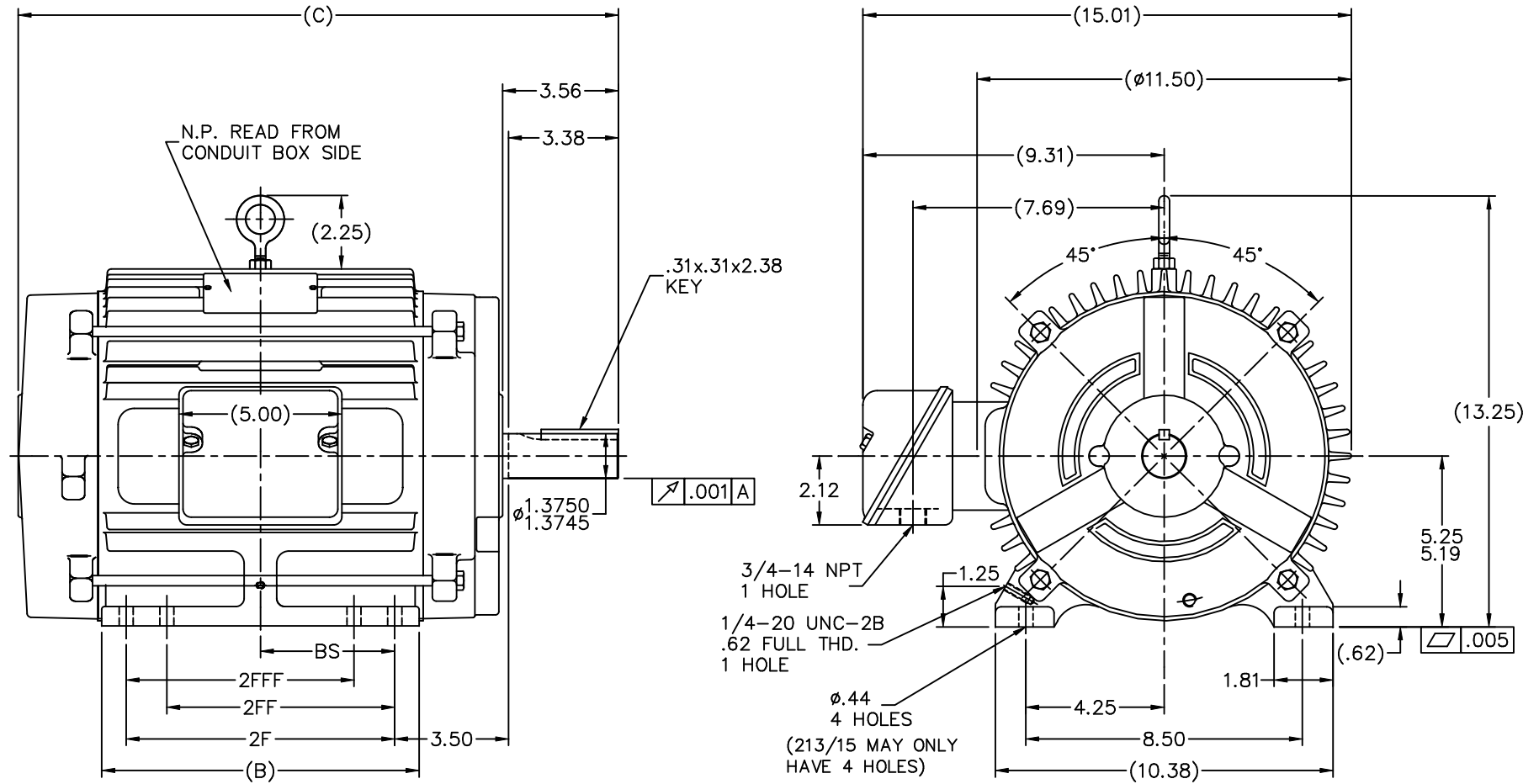
Nameplate Specifications

Output HP	7.50 Hp	Output KW	5.6 kW
Frequency	60 Hz	Voltage	575 V
Current	7.1 A	Speed	3535 rpm
Service Factor	1.15	Phase	3
Efficiency	91.7 %	Duty	Continuous
Insulation Class	F	Design Code	B
KVA Code	H	Frame	213T
Enclosure	Totally Enclosed Non Ventilated	Overload Protector	No
Ambient Temperature	40 °C	Drive End Bearing Size	6307
Opp Drive End Bearing Size	6206	UL	Recognized
CSA	Y	CE	Y
IP Code	56		

Technical Specifications

Electrical Type	Squirrel Cage Inverter Rated	Starting Method	Line Or Inverter
Poles	2	Rotation	Reversible
Mounting	Rigid base	Motor Orientation	Horizontal
Drive End Bearing	Ball	Opp Drive End Bearing	Ball
Frame Material	Cast Iron	Shaft Type	T
Overall Length	17.18 in	Frame Length	8.75 in
Shaft Diameter	1.375 in	Shaft Extension	3.56 in
Assembly/Box Mounting	F1/F2 Capable		
Outline Drawing	B-SS85995A-875	Connection Diagram	A-EE7300U

This is an uncontrolled document once printed or downloaded and is subject to change without notice. Date Created: 06/29/2018



- NOTES:
 1. BOX CAN BE ROTATED IN 90° STEPS.
 2. BOX CAN BE MOUNTED ON OPPOSITE SIDE BY REMOVING BRACKETS AND TURNING FRAME 180°.

DASH	FRAME	B	2F	2FF	2FFF	BS	C	AG
725	213T	7.00	5.50	-	-	2.75	15.68	12.30
875	215T	8.50	7.00	-	-	3.50	17.18	13.08
875	213/5T	8.50	7.00	5.50	5.50	3.50	17.18	13.80
1000	213T	9.75	8.25	5.50	5.50	4.12	18.43	15.05
1000	215T	9.75	8.25	7.00	7.00	4.12	18.43	15.05

		TOLERANCES UNLESS SPECIFIED		MARATHON ELECTRIC		DRAWN BLR 09-30-1999	
		DEC.	INCHES			CHK	DRS 10-01-1999
3	REDRAWN IN AUTOCAD	TAT	06-29-2004	ML	.XX ±.03	TITLE OUTLINE	
2	REVISED BACK TO ORIGINAL, NO C' FACE	CN 28426	CAV	03-29-2000	.XXX ±.005	210 FR. - TENV - CAST CONDUIT BOX	
1	NEW DRAWING	BLR	10-01-1999	.XXX ±.0005	MATL	SCALE 5-16	
NO.	REVISION	BY & DATE	CHK	ANG	±7'30"	FINISH	REF
THIS DRAWING IN DESIGN AND DETAIL IS OUR PROPERTY AND MUST NOT BE USED EXCEPT IN CONNECTION WITH OUR WORK ALL RIGHTS OF DESIGN AND INVENTION ARE RESERVED THIS IS AN ELECTRONICALLY GENERATED DOCUMENT - DO NOT SCALE THIS PRINT						RFP	PREV
						CAD FILE ss85995a	SIZE
						DIST LB	DRAWING NO. PAGE OF REV.
						B	SS85995A 3

IF MOTOR HAS 9 LEADS



IF MOTOR HAS 6 LEADS



A-9806 DECAL IF CALLED FOR

IF MOTOR HAS 12 LEADS



VIEW OF TERMINAL END

DRAWING REVISION L	REVISION BY AJW	DATE 05-04-2015	TOLERANCES UNLESS OTHERWISE SPECIFIED: DEC. INCH mm ANGLE	DRAWN BY DRS	Regal Beloit America, Inc.	
ECO ECO-0077067	APPROVED BY EWH	DATE 05-05-2015	.X ±0.1 [±2.5] ±7' 30" .XX ±0.02 [±0.51] .XXX ±0.005 [±0.127] .XXXX ±0.0005 [±0.0127]	DATE 09-27-1996		
ECO DESCRIPTION UPDATED TO SOLIDWORKS			REMOVE BURRS & BREAK SHARP EDGES: .003/.015 [.076/.381] X 45° CORNER FILLETS: R.02 [.51] MACHINED SURFACES: 200 INCH 5.1 mm mm SHOWN IN [BRACKETS]	APPROVED BY GK	DESCRIPTION CONN DIAGRAM-EXTERNAL 3Ø SINDLE VOLTAGE	
<small>COPYRIGHT REGAL BELOIT AMERICA, INC. ALL RIGHTS RESERVED. PROPRIETARY AND CONFIDENTIAL INFORMATION - THIS DOCUMENT IS THE PROPERTY OF REGAL BELOIT AMERICA, INC. ("OWNER") AND CONTAINS OWNER'S PROPRIETARY INFORMATION. ANY PERSON, CORPORATION OR OTHER FIRM RECEIVING IT IS DEEMED, BY RECEIVING IT, TO AGREE THAT IT, AND/OR ANY PART OF IT, SHALL NOT BE DISCLOSED TO ANY PERSON, CORPORATION OR OTHER ENTITY, DUPLICATED, AND/OR USED, EXCEPT AS EXPRESSLY APPROVED IN WRITING IN ADVANCE BY OWNER. THIS DOCUMENT SHALL BE RETURNED TO OWNER UPON REQUEST. IT MAY BE SUBJECT TO CERTAIN RESTRICTIONS UNDER APPLICABLE EXPORT CONTROL LAWS AND REGULATIONS.</small>				DATE 09-30-1996	MATERIAL	PROCESS/FINISH
						REFERENCE
			THIRD ANGLE PROJECTION			

